



Creating Maps on the Kids' Well-being Indicators Clearinghouse (KWIC)

KWIC is often used to conduct community needs assessments and prepare grant proposals. The county data is useful but tends to focus on deficits (e.g., poverty) and information about the community resources needed to reduce those deficits has been lacking. Now, using the redesigned KWIC mapping tool, users are now able to map various sub-county boundary levels. Additionally, users are able to map community asset location data (e.g., WIC office) and visualize their community assets and deficits simultaneously. Viewing this data together on a map helps grant writers make a case for need and increases planning accuracy. For example, being able to view the number of preschool-aged children in a school district along with child care centers is helpful for school districts that are planning for incoming students. The KWIC mapping tool allows users to see where clusters of services exist and/or are lacking in a community, to view capacity information and much more.

This map tool provides the ability to map the full range of KWIC data, as well as school and demographic data at many geographic levels. Also, users are able to map points of interest for an in-depth view of counties and communities across the state. Features of the Map Builder allow users to:

- **Map KWIC indicators and compare maps across years**
- **Map demographic and census data for a range of geographic boundaries**
- **Map/View/Export a wide range of school district and public school data**
- **Export data sets for all geographic boundaries and community assets**
- **View/Export county and indicator reports**
- **Print maps**
- **View community assets**

To access the map tool in KWIC:

- Click the *Data Tools* tab or *Data Tools* box on the home page (www.nyskwic.org)
OR
- Click the *Map Builder* link from any indicator page. (<http://www.nyskwic.org/map/kwicmap.cfm>)

Tips for Using the KWIC Map Tool

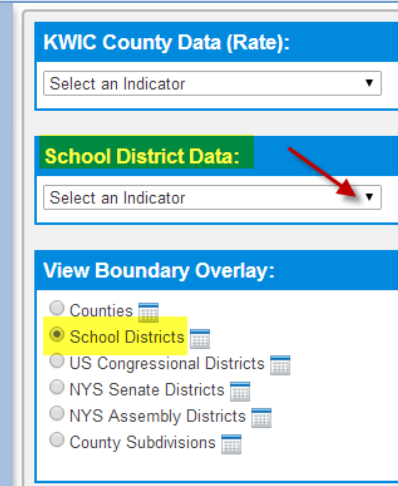
When possible, **zoom** into a selected region before selecting more detailed map layers like school districts and public schools. Zoom in and out using the plus and minus signs, double-clicking in the map, or using the scroll button on your mouse.



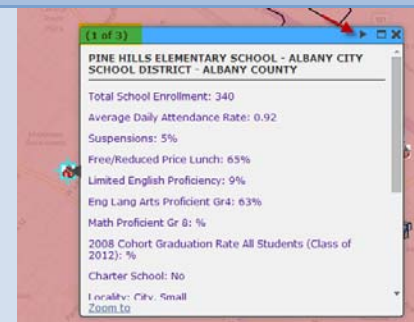
Use the **location box** to type in a specific location – be sure to include “NY” in your search or you may end up in Rome, Italy, rather than Rome, NY.



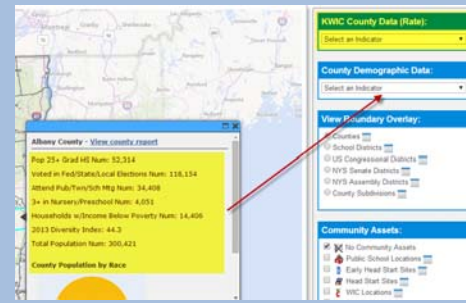
Once a boundary is selected, the second selection box will update to show indicators available for **mapping data for the selected boundary**.



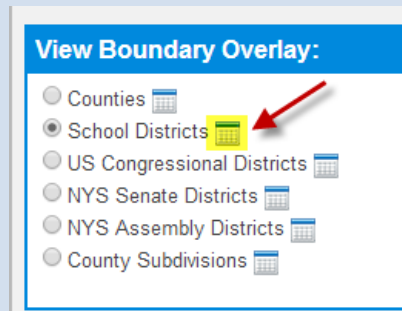
When viewing more than one item on a map, be sure to use the arrow head to drill down to view all map layers. **Map layers** are presented in a manner very similar to the way projectors use transparency overlays. Map layers stack on top of one another. To view data of interest, click the small black arrow in the title bar to scroll through all layers.



The default map displays **county demographic data** (a selection available from the “View Boundary Overlay” box). All indicators presented in the pop-up box can be mapped by selecting an indicator from the box above. Remember, all KWIC indicators can be mapped at the county level. KWIC indicators are displayed in the first selection box titled, “KWIC County Data”.



The small table icon located to the right of each boundary and asset contains the **entire set of data for the boundary or asset**. Not all data can be displayed in a map pop-up, so be sure to view the entire data set using this feature. Data can be sorted and filtered in the data display window or click download to save to Excel.



KWIC Boundary Info:
 School Districts | Submit

Source: School District Boundary. Boundary shapefile is a combination of the US Census - Tiger Files - 2010 Census and a shapefile from NY State Open Data website containing NY State Geographic School Districts downloaded November 2013. School District Data: NYS Education Department BEDS data - November 2013.

Listing For: School Districts | Data Dictionary

Show: All | entries | Save to Spreadsheet | Search: Albany

BEDS Code	School District Name	County Name	K-12 Total Enrollment	PK Enrollment	K-Half Day Enrollment	K-Full Day Enrollment	G1 Enrollment	G2 Enrollment	G3 Enrollment	G4 Enrollment	G5 Enrollment
[010100010000]	ALBANY CITY SCHOOL DISTRICT	ALBANY	7,838	891	Not applicable or missing	756	711	656	664	628	603
[010601000000]	SOUTH COLONIE CENTRAL SCHOOL DISTRICT	ALBANY	9,025	230	Not applicable or missing	361	334	376	319	361	352
[010802000000]	QUEENSBURGH CENTRAL SCHOOL DISTRICT	ALBANY	6,013	Not applicable or missing	Not applicable or missing	307	330	352	409	345	345
[013300000000]	BETHLEHEM CENTRAL SCHOOL DISTRICT	ALBANY	4,910	Not applicable or missing	Not applicable or missing	301	319	344	326	370	386

Data dictionaries and **data sources** for each data set are included on the data download page for each boundary and a glossary of terms is included on the data download for public schools community asset.

KWIC Boundary Info:
 School Districts | Submit

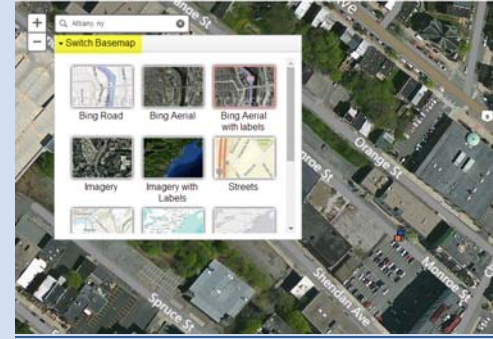
Source: School District Boundary. Boundary shapefile is a combination of the US Census - Tiger Files - 2010 Census and a shapefile from NY State Open Data website containing NY State Geographic School Districts downloaded November 2013. School District Data: NYS Education Department BEDS data - November 2013.

For: School Districts | Data Dictionary

entries | Save to Spreadsheet | Search:

School District Name	County Name	K-12 Total Enrollment	PK Enrollment	K-Half Day Enrollment	K-Full Day Enrollment	G1 Enrollment	G2 Enrollment	G3 Enrollment	G4 Enrollment	G5 Enrollment
2000 ADDISON CENTRAL SCHOOL DISTRICT	STEUBEN	1,135	71	Not applicable or missing	84	79	75	94	86	100
3000 ADIRONDACK CENTRAL SCHOOL DISTRICT	ONEIDA	1,281	74	Not applicable or missing	95	91	82	107	85	100

Use the **Switch Basemap** option to change the view of your map.

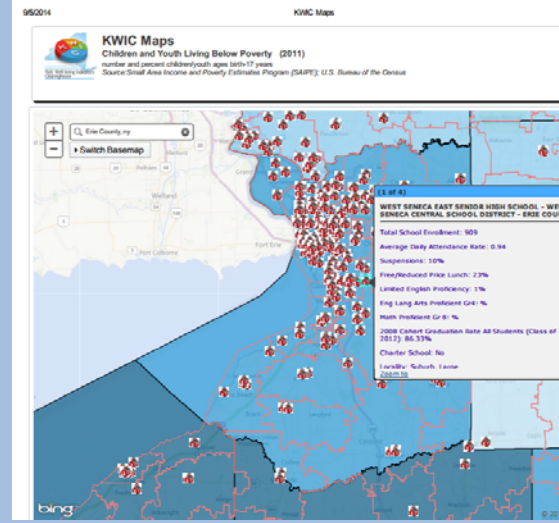


KWIC County Reports are available from the county layer.

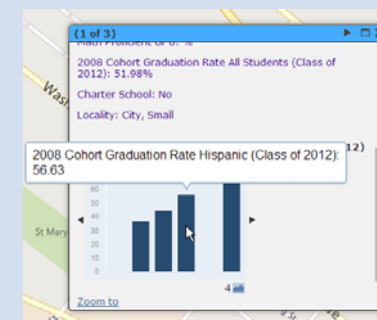
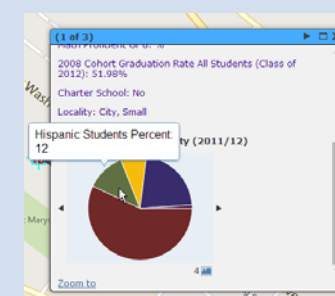
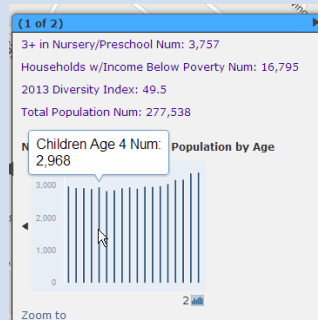
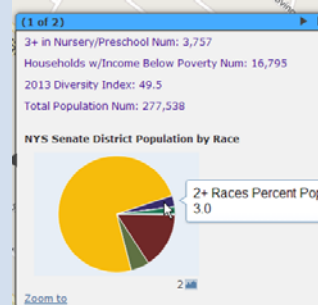
KWIC Indicator Reports are available from a KWIC indicator map.

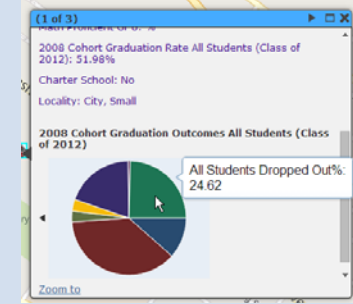
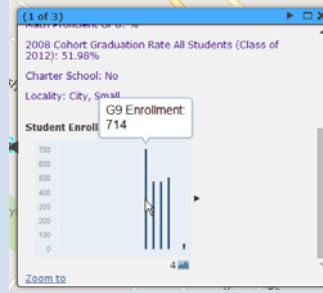
Category	Value	Statistics
Dark Blue	≥26.2	# units: 62.0
Medium-Dark Blue	≥21.8 and <26.2	min: 6.5
Medium-Light Blue	≥17.4 and <21.8	max: 40.9
Light Blue	<17.4	median: 21.8 average 22.8

Maps will **print** from your browser at the current view zoom level.



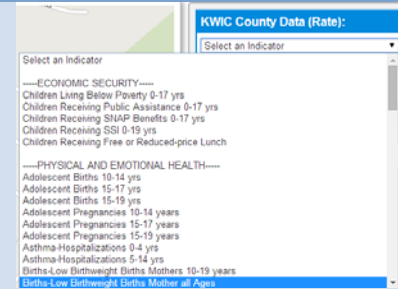
All boundary pop-ups have **dynamic infographics** displaying the current boundary **population by race and age**. In addition to the population by race and age, the school district boundary also contains **student enrollment by grade and students by race/ethnicity**. The public school community asset also contains student enrollment by grade and students by race/ethnicity. High schools also contain **cohort graduation rates by race and cohort graduation outcomes for all students**.





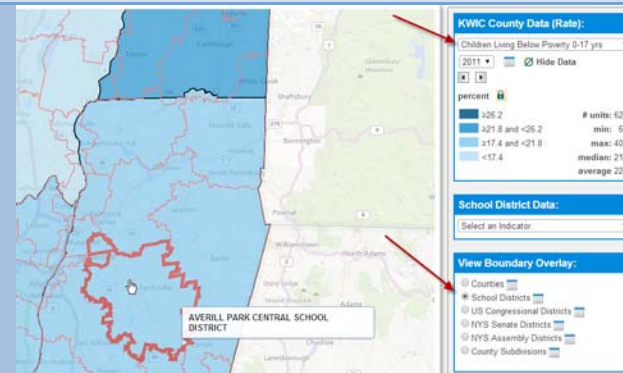
KWIC Indicator Data Box

Display a county-by-county view of each KWIC indicator – Use the KWIC County Data drop down menu to select a KWIC indicator and create a map. The most recent year of data is displayed. The data intervals are based on the NYS median rate.

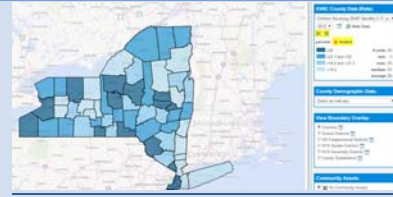


A second boundary may be viewed on top of KWIC indicator data – Select an additional boundary from the “View Boundary Overlay” box to view a boundary overlay.

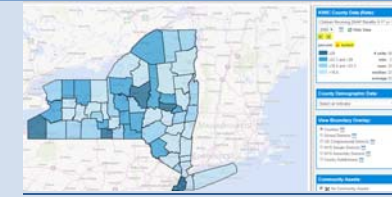
NOTE: Please keep in mind that the shading refers to the county, not the boundary overlay.



Make comparisons across years – This feature provides a comparable view of how the indicator has changed across years. Select an indicator, lock the intervals, and then click the arrows to view how the selected indicator has changed through the years.



2012



2009

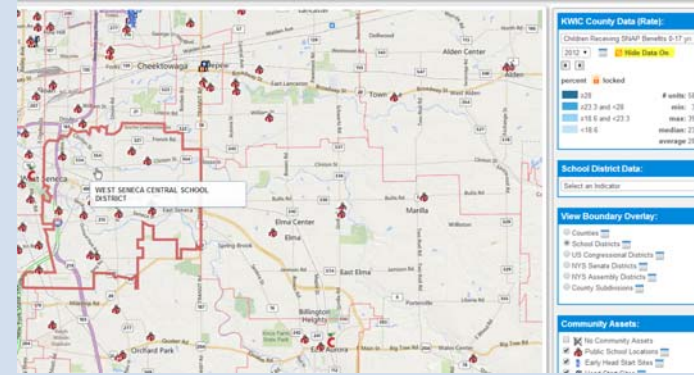


2005



2000

Hide indicator data – At any time, the color shades that represent the data can be removed to view a general map of New York. Click the hide data symbol to remove the data shading.



Boundary Overlay Box

View data for additional New York State boundaries. The geographic boundaries include counties, county subdivisions (towns and cities within a county), school districts, US Congressional districts and NY Senate and Assembly districts.

NOTE: Once a boundary is selected, a listing of indicators that can be mapped at the selected geographic boundary will be displayed.

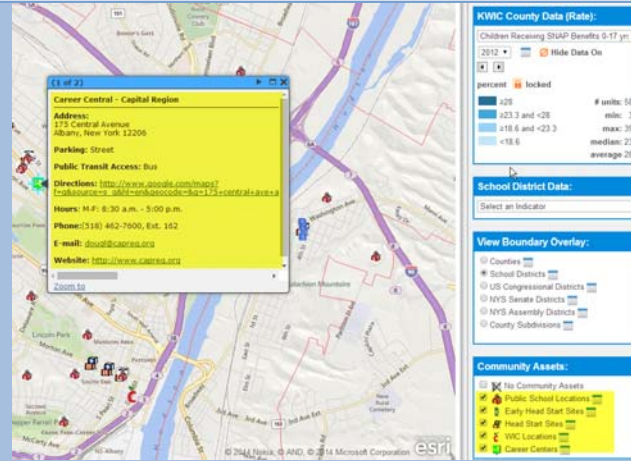
View Boundary Overlay:

- Counties
- School Districts
- US Congressional Districts
- NYS Senate Districts
- NYS Assembly Districts
- County Subdivisions

Community Assets Box

View community assets – Map the community assets available within the various geographic boundaries to gain a better understanding of the types of resources available within an area to support children and their families.

- A symbol appears on the map when an asset is selected. Click on the symbol to get additional information about the community asset.



For questions or assistance using this mapping tool, please contact Robin Miller or Cate Bohn at kwic@ccf.ny.gov.